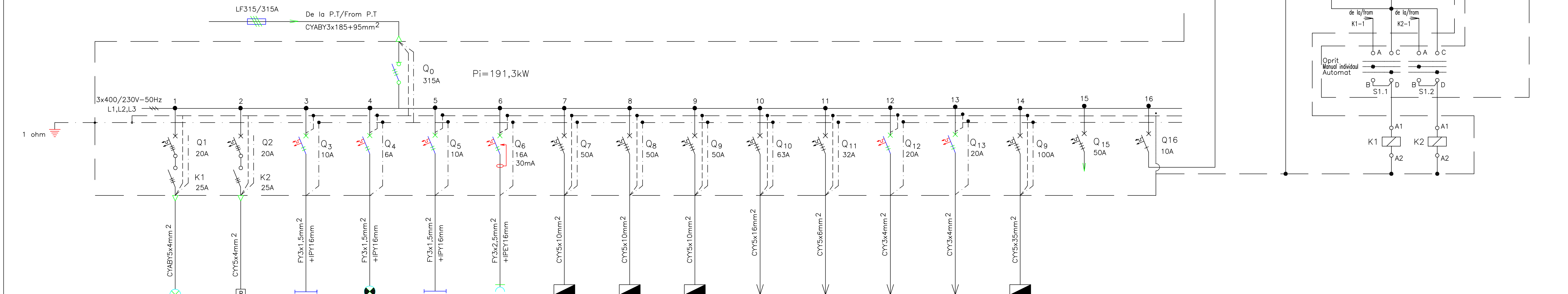


TABLOU T.G
T.G. BOARD



Nr. circuit Circuit number	1	2	3	4	5	6	7	8	9	10	11	12	13	14	15	16				
Pi [kW]	2	1,25	0,3	0,02	0,32	2	22,73	21,52	28,47	30	12	4	2	63.89	-	0,8				
Destinatia Destination	Iluminat exterior Outdoor lighting	16L/Lamps	Iluminat exterior Outdoor lighting	5L/Lamps	Subsol tehnic Technical basement	6L/Lamps	Iluminat pe scari Lightning stairs	6L/Lamps	Subsol tehnic Technical basement	SLP/Sockets outlet	Tablou T.P.1 T.P.1 board	Tablou T.E1-1 T.E1-1 board	Tablou T.E2-1 T.E2-1 board	Sala de sport Sport room	Gospodarie apa	Cabina poarta	Ghena ecologica	Tablou T.S T.S board	Rezerva trifazata Three-phase reserve	Circuit control Control circuit

SPECIFICATIE DE APARATAJ T.G
EQUIPMENT SPECIFICATION OF T.G

Nr. No.	Symbol Simbol	Denumirea aparatului Equipment denomination	Caracteristici tehnice Technical data	UM MU	Quantita Quantity	Observatii Remarks
0	1	2	3	4	5	6
1	Q0	Separator de sarcina tripolar Three-poles switch-disconnectors	Ue=690V Iu=315A f=50Hz	buc pcs	1	
2	Q3,Q5	Intrerupator automat miniatura bipolar/Two-poles miniature circuit- breaker	Un=230V In=10A f=50Hz	buc pcs	2	
3	Q6	Intrerupator automat miniatura bipolar prevazut cu dispozitiv de curent rezidual/Two-poles miniature circuit breaker with residual current device	Un=230V In=16A f=50Hz I.n=0,03A curba C curve C Nivel de imunitate la forma de unda 8/20µs=250A	buc pcs	1	
4	Q4	Intrerupator automat miniatura bipolar/Two-poles miniature circuit- breaker	Un=230V In=6A f=50Hz	buc pcs	1	
5	Q7,Q8,Q9 Q15	Intrerupator automat miniatura tripolar/Three-poles miniature circuit- breaker	Un=400V In=50A f=50Hz	buc pcs	5	
6	Q1,Q2	Intrerupator automat miniatura tripolar/Three-poles miniature circuit- breaker	Un=400V In=20A f=50Hz	buc pcs	2	
7	K1,K2	Contactar electromagnetic tripolar de curent alternativ/Contactar AC operated three-poles	Un=690V In=25A f=50Hz	buc pcs	2	
8	Q10	Intrerupator automat miniatura tripolar/Three-poles miniature circuit- breaker	Un=400V In=63A f=50Hz	buc pcs	1	
9	Q11	Intrerupator automat miniatura tripolar/Three-poles miniature circuit- breaker	Un=400V In=32A f=50Hz	buc pcs	1	
10	Q12,Q13	Intrerupator automat miniatura bipolar/Two-poles miniature circuit- breaker	Un=230V In=20A f=50Hz	buc pcs	2	
11	Q16	Intrerupator automat miniatura monopolar/Single-pole miniature circuit- breaker	Un=230V In=10A f=50Hz	buc pcs	1	
12	KA1	Intrerupator crepuscular Crepuscular switch	Ug=230Vca In=10A/250V f=50Hz Tf=-40°C...+70°C IP66 2fire/2wire	buc pcs	1	
13	B1	Celula fotoelectrica Photoelectric cell		buc pcs	1	
14	S1	Comutator cu came Cam switch	Un=230V In=10A f=50Hz	buc pcs	1	
15	S1.1,S1.2	Comutator cu came tripolar Three-pole cam switch	Un=230V In=10A f=50Hz	buc pcs	1	
16	Q14	Intrerupator automat miniatura tripolar/Three-poles miniature circuit- breaker	Un=400V In=100A f=50Hz	buc pcs	1	
17	-	Cutie/Box	IP65	buc pcs	1	

NOTA: ALL MEASUREMENTS SHOULD BE MADE ON SITE TOATE MASURATORILOR SA SE FAÇA LA FATA LOCULUI

VERIFICATOR M.L.P.A.T.		NUME NAME	SIGNATURA SIGNATURE	CERINTA REQUIREMENT	REFERAT / EXPERTIZA NR. / DATA REPORT / TECHNICAL EXPERTISE / DATE
VERIFICATOR M.L.P.A.T.					
PROJECT DESIGN COORDINATOR: COORDINATOR PROJECT					
BUCHAREST SCHOOLS INFRASTRUCTURE REHABILITATION / REABILITAREA INFRASTRUCTURII EDUCATIONALE IN MUNICIPIUL BUCURESTI					
DESIGNER/PROJECTANT:		M4			
		M3			
		M2			
		M1			
		Modif. Data/Date			
		DESIGNED BY/PROJECTAT			
		VERIFIED BY/VERIFIKAT			
		PROJ. DIR./SEF PROJECT			
BENEFICIARY/BENEFICIAR: MUNICIPALITY OF BUCHAREST PRIMĂRIA MUNICIPIULUI BUCURESTI		SCHOOL NAME/ NOME SCOLII			
		General School no. 36 / Scoala Generala nr. 36			
DESIGNED BY PROIECTAT		NAME/ NOME		SIGNAT./SIGNATURA	
VERIFIED BY VERIFIKAT		Ing. Valentin RADU		TYPE OF WORKS/ LUKARE	
PROJ. DIR. SEF PROJECT		Ing. Dorin MATEI		TITLE/ PLANSA	
DATE/ DATA		04/2006		T.G BOARD TABLOU T.G	
SCALE/ SCARA		-		EXEMPLAR NR.	
				PROJ. PHASE/FAZA PROJECT Detailed Design Proiect tehnic	
				PROJ. No./Nr.PROJECT 063/54	
				DRWG. No./Nr. PLANSA A - EL - 020	